

August 25, 2025

City of Yellowknife **Artist-in-Residence** Funding Allocation

Presented by Mary Buckland, on behalf of the NWT Art Centre Initiative

WHO WE ARE IN OUR COMMUNITY



Mary Buckland is a born-and-raised Yellowknifer who has attended and managed international residencies in the Circumpolar North, and completed a Masters of International Arts Management with a thesis dedicated to Artist Residency Operations Within the Context of the Circumpolar North. Mary currently works and volunteers with 5 local non-profits.



The **NWT Art Centre Initiative** was founded in March of 2022 to create a space to celebrate NWT art and to inspire future generations of artists. The NWT Art Centre is on track to begin construction in late-2027. We will develop exhibitions, public programs, and educational and skill development in the visual arts.

OVERVIEW

In order to support meeting the commitments of the Council Strategic Directions 2023-2026, and the City of Yellowknife Arts & Culture Master Plan, **this proposal advocates for \$25,000.00 to be allocated to a competitive process open to local non-profit organizations** interested in establishing and running an Artist-in-Residence (AiR) program for the City of Yellowknife.

WHAT IS AN ARTIST-IN-RESIDENCE?

Artists' residencies' provide **artists and other creative professionals with time, space and resources to work**, individually or collectively, on areas of their practice that reward heightened reflection or focus. (OMC, 2014)

Artist-in-residence programs vary considerably:

- Delivery
- Eligibility
- Capacity
- Economics
- Productivity
- Hosting

For details and examples, please access the following link: [Artist Residency Programs](#)

HOW WOULD AN AiR BENEFIT YK?

An artist-in-residence program would contribute to the City of Yellowknife's arts and culture sectors by **providing spaces for artists to develop and share their skills and networks**, but also for community members to engage with these sectors for their own **personal and professional betterment**.

Common benefits that artists' residencies bring:

- Artists' professional development;
- Economic benefits for the artist, the host, the region, etc.;
- Cultural development for the artist, the host organization, the local community;
- Learning and capacity building for the host organization and community partners;
- Profile raising, particularly for the city/region where the residency is located.

WHERE IS THIS COMING FROM?

Council Strategic Directions 2023-2026

Provide affordable and diverse **recreation and arts opportunities** for residents

Arts & Culture Master Plan, 2022

Formalize a **city 'artist in residence' program**. (Pillar 1, Objective 2: Facilitate capacity building for the arts sector)

Explore formal partnership opportunities with existing non-City owned spaces (Pillar 2, Objective 1: Assess and plan for cultural infrastructure to meet short and long-term needs)

AiR Operations Within the Context of the Circumpolar North, 2024

In a survey of recurring artist-in-residence programs conducted from March to August of 2024, with 185 AiRs found North of the 60th parallel, **only 1 was located within the NWT**.

HOW WOULD AN AIR BE DELIVERED?

In lieu of a City-coordinated AiR program, we propose that the City of Yellowknife create the financial support for organizations to deliver this programming.

The AiR would be administered:

- By a local arts and culture non-profit;
- With additional funding, leveraging a City of Yellowknife contribution; and
- In partnership with other local non-profits to support the success of the AiR.



WHAT IMPACT WOULD 25K HAVE?

Pulled from your *Arts & Culture Master Plan*:

Leadership & Support

The necessary leadership to move initiatives forward and continue to support the arts in the appropriate ways.

City & Lead Organization

Spaces & Places

The spaces and places for artists to display, perform, and create as well as for audiences to experience arts & culture.

City & Community Partners

Celebrating Diversity

Arts and culture that celebrates all of the diversity of Yellowknife.

Artists (local, territorial, national)

Connections & Visibility

The building of networks across the arts, and with other partners (e.g., tourism).

All stakeholders, including Public

CONCLUSION

The goals of the Council Strategic Directions and the Arts & Culture Master Plan can be realized with fewer resources from the City by working collaboratively. If the City provides \$25,000.00, local non-profit organizations can conceive and run AiR opportunities and leverage this contribution. A City AiR will engage local partners, activate spaces, and connect audiences for the benefit of the community.

Budget Proposals 2026

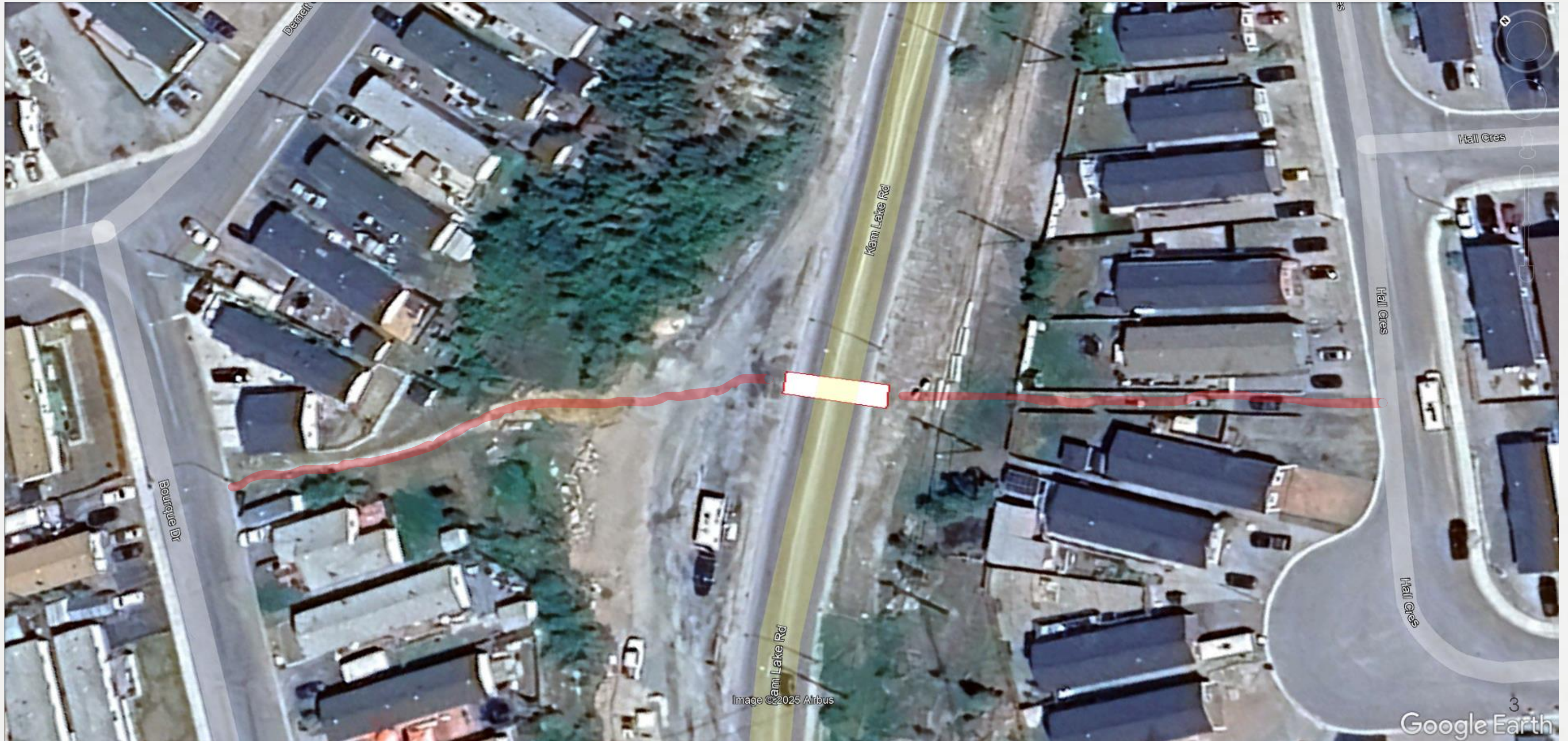
Active Mobility is good for the individual and the community

- ① People who commute by foot or bike have fewer chronic illnesses, including mental illness.
- ② They have more disposable income and spend more locally.
- ③ They contribute far less to pollution, noise pollution, and traffic congestion
- ④ Many people can't, won't, or shouldn't own a car for personal, medical, or financial reasons.

— Making the streets accessible to all

- ① Many people are choosing to drive due to safety, security, or accessibility concerns.
- ② Yellowknife has gaps in its walking and cycling infrastructure network
- ③ One gap in the walking/cycling network can be all it takes to stop a journey from happening.

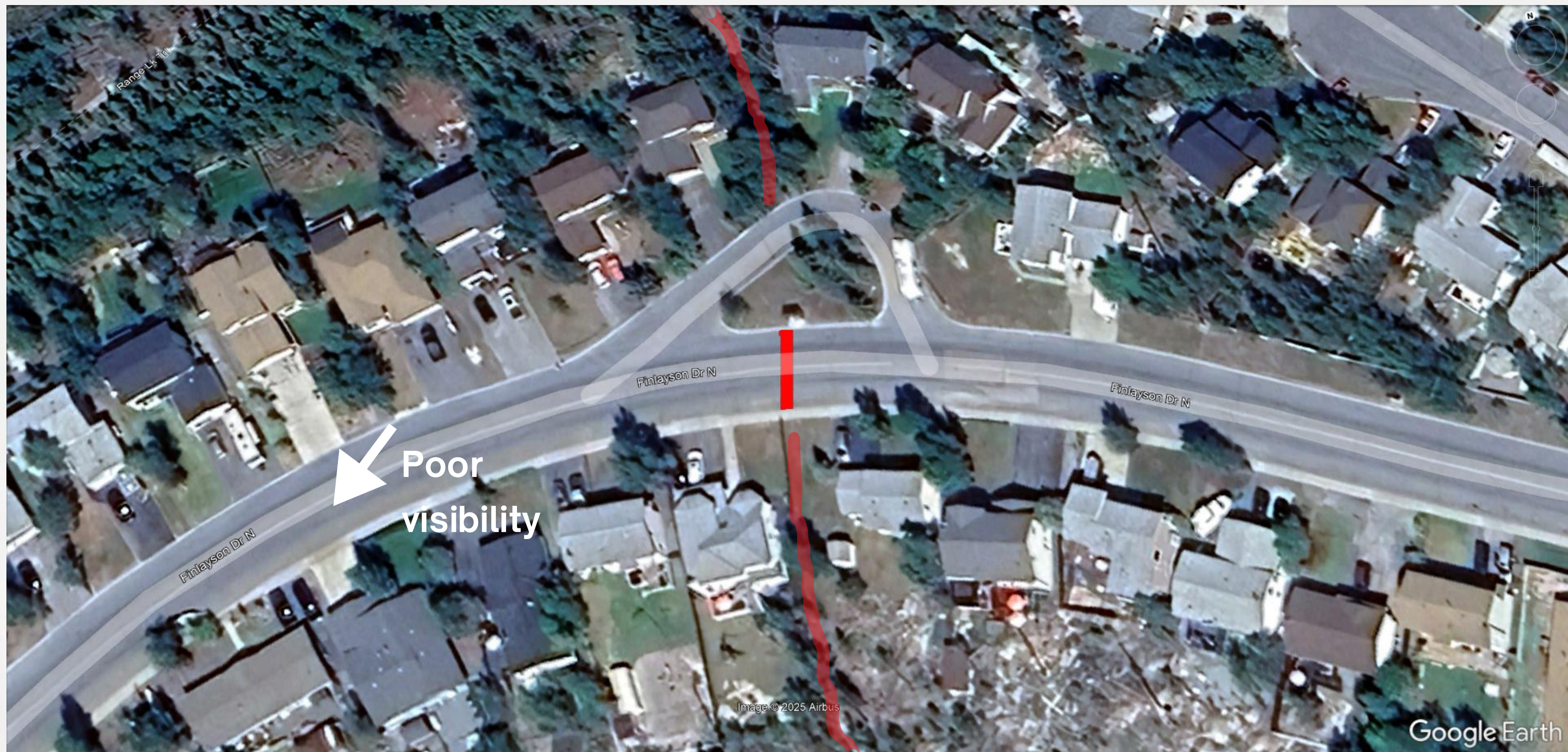
— Hall Cres across Kam Lk Rd to Bourque Dr



— 349 Old Airport Road



— 6164 Finlayson Drive



— 6164 Finlayson Drive



— Hospital Boardwalk



— Hospital Boardwalk



The End

Budget Requests

1. Artwalks - School Streets
2. Signage Program
3. Trail/Multi-Modal Counters
4. Frame Lake Trail



Becca Denley | Aug 25, 2025

becca.denley@gmail.com

Artwalks

SCHOOL STREETS PILOT PROJECT

COMMUNITY ACTION – EDUCATION – EMPOWER STUDENTS

- Kids learn about how to develop large scale art projects with a champion teacher(s), volunteer(s) and an artist who has created a draft design.
- Students and volunteers paint the artwork in May over the course of 2-days per crosswalk
- Touch-ups can be planned for future years.
- Let's grow a movement for Safe School Streets





Artwalks

SCHOOL STREETS PILOT PROJECT

COMMUNITY ACTION – EDUCATION – EMPOWER STUDENTS

- City of Yellowknife: I encourage a team be assembled to apply on the **Green Municipal Fund**
- Northern Communities such as Yellowknife would be eligible for 80-100% of the costs around creating safe and active school routes.
- funds Infrastructure projects that promote safer school routes and provides educational guidance to team members over the course of a 2-year period.

<https://greenmunicipalfund.ca/funding/safe-and-active-school-routes>



Signage

NO RIGHT ON RED – MULTI-USE PATHS – BIKES AND CARS WELCOME
EDUCATE, NORMALIZE MULTI-MODAL USE

- A well designed street and a culture of safety would mean that no signage would be required. But our streets and culture do not currently cater to that level of safety
- Our Streets are designed to be quite big, and that encourages faster vehicles.
- road users don't know where multi-use paths vs sidewalks are located and it creates confusion and conflict

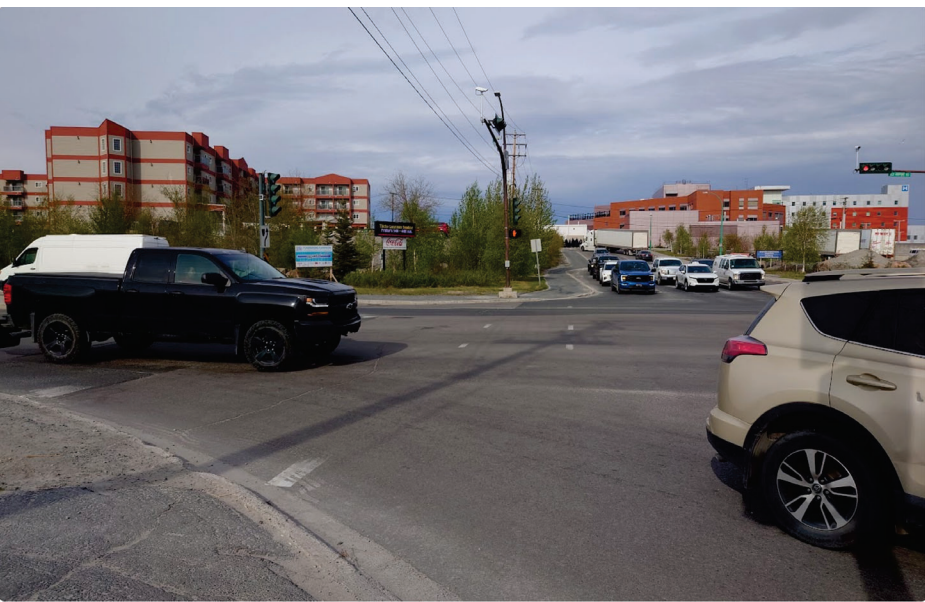
PROMOTE SAFER STREETS

Two children hit by Yellowknife drivers in the space of a week



Claire McFarlane · Wednesday July 10, 2024 at 6:21am MT · Updated: July 14, 2024 at 2:24pm MT





Signage

NO RIGHT ON RED – MULTI-USE PATHS – BIKES AND CARS WELCOME
EDUCATE, NORMALIZE MULTI-MODAL USE

- Outside of signage, community groups are examining ways to educate kids, adults on safe biking, maneuvering mobility aids, etc.
- the responsibility also lies with people driving vehicles. So let's continue to brainstorm ways to help our community understand responsibilities and safe driving.

Here are some examples of helpful signage to normalize multiple road users



Counters

ECO-COUNTER AND/OR MULTI-MODAL COUNTERS

Data Collection and Research are an essential part of a community's growth and development.

- ✓ Monitor usage of Trails and Streets for infrastructure planning, maintenance, and investment
- ✓ Support increased research and knowledge sharing of data
- ✓ Increase Communications with residents/city/stakeholders about the impact of infrastructure updates and investment



Types of Counters

DATA COLLECTION AND ANALYSIS

Multi-Use Trails



Eco-Counter uses magnetic sensors that are buried in the pavement and connected to a solar panel or electrical source.

Downtown Streets



Multi-Sensor uses infrared sensors and non-recognition AI technology to differentiate between road users - helpful for busier, multi-modal streets

Neighbourhoods



Multi-Sensor is also helpful for residential areas where kids on bikes may choose sidewalks to use and mobility devices might use the road



Frame Lake Trail

BUDGET ASK TO SUPPORT
ACTIVE TRANSPORTATION FUND APPLICATION
CITY APPLIED ON FEB. 25, 2025



Frame Lake Trail

SUPPORT ACTIVE TRANSPORTATION FUND

A Budget Request
on behalf of Communities in Motion

- ✓ Active Transportation Fund Application
February February 25, 2025
... waiting for results of application
- ✓ In Line with XXX Community Fund
Supports longterm connectivity to nature
Ecological Answer
- ✓ Connect Schools/Services/Work
ACCESSIBILITY
Inclusive





GREEN
MUNICIPAL
FUND

FONDS
MUNICIPAL
VERT

A program of
FCM

FUNDING ▾

LEARNING CENTRE ▾

OUR WORK ▾

ABOUT ▾

Helping Canadian communities build a sustainable, resilient and prosperous future

Explore new funding and support to accelerate active school travel routes in your community

[Learn more and apply today](#)





An inclusive, safe, healthy, and livable city is one where everyone can move freely and enjoy our community spaces without fear or prejudice, embracing all who call it home.

When considering how we allocate spaces in our city, let's prioritize the needs of the youngest and oldest first. By doing so, we uplift and support everyone.

thank-you